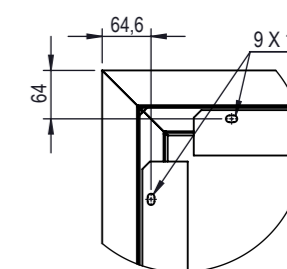
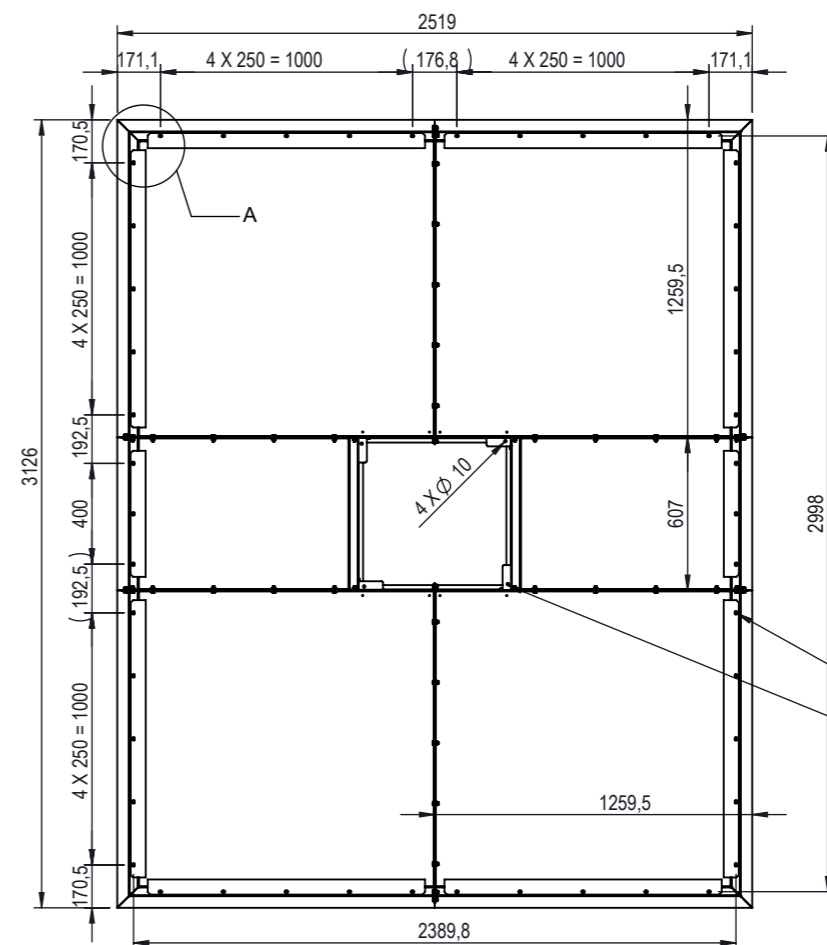
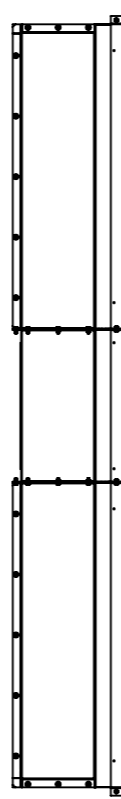
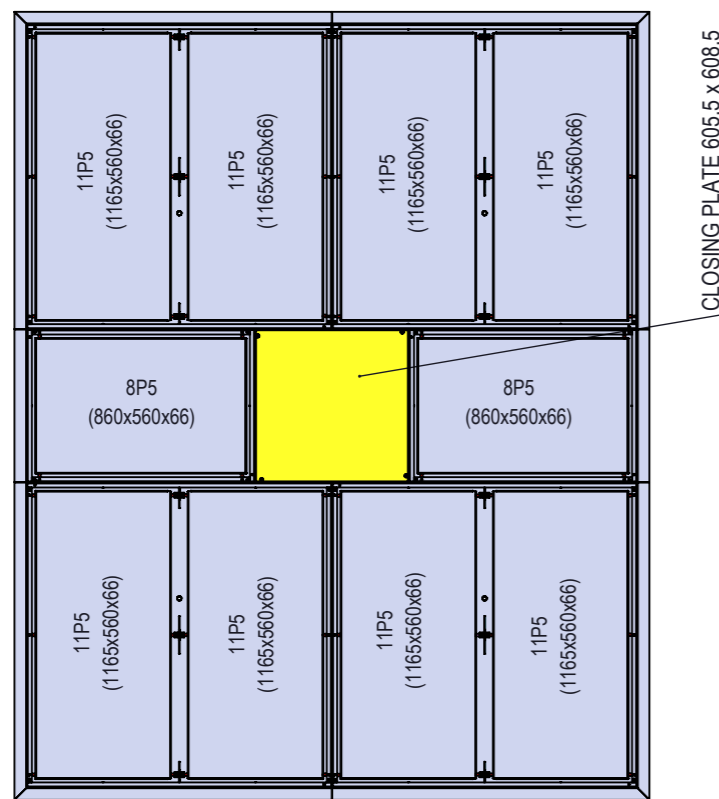


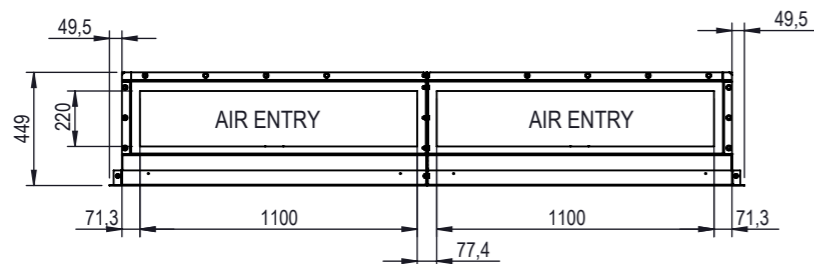
REVISION	DESCRIPTION	DATE	DESIGN	APPROVED
D	AIRFLOW AND AIRSPEED VALUES CHANGED	4.7.2018	MAM <i>MAM</i>	VPA <i>VPA</i>

A
B
C
D
E
F



DETAIL A

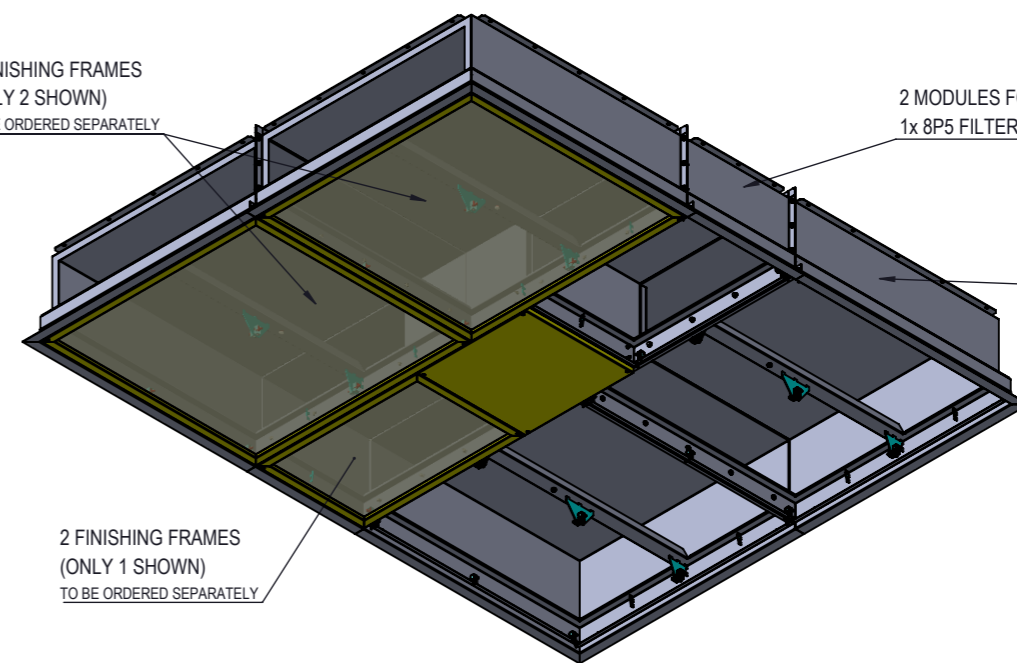
46 HINGE SUPPORT POINTS ON PERIPHERY PLUS 4 IN CENTER



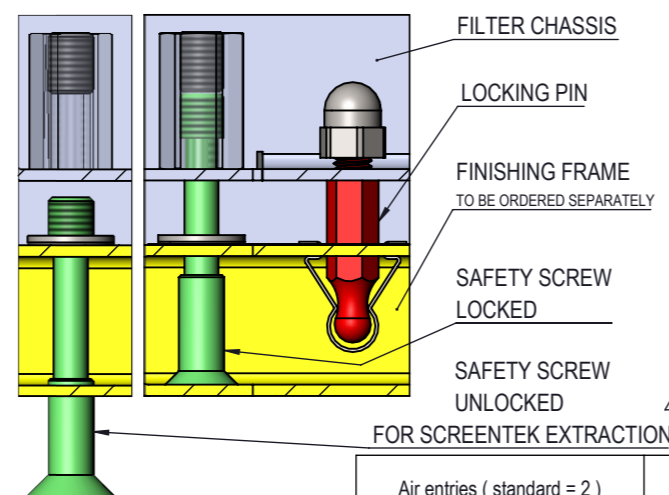
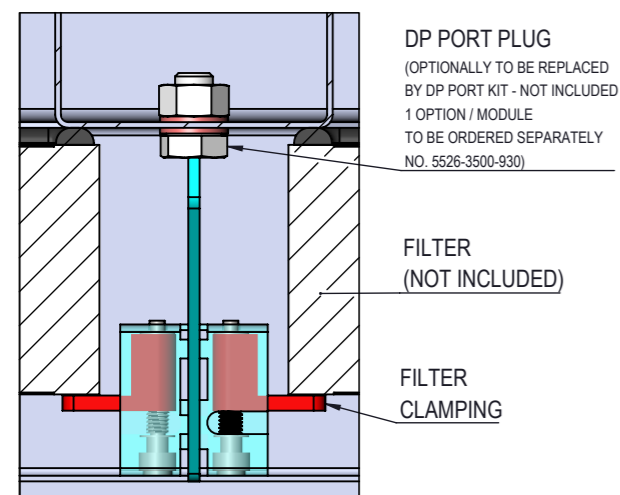
4 FINISHING FRAMES (ONLY 2 SHOWN) TO BE ORDERED SEPARATELY

2 MODULES FOR 1x 8P5 FILTER PANEL

4 MODULES FOR 2x 11P5 FILTER PANELS



2 FINISHING FRAMES (ONLY 1 SHOWN) TO BE ORDERED SEPARATELY



* additional air entries required for recommended airspeed <5m/s

		Air speed @		
Air entries (standard = 2)		5360m³/h	6430m³/h	9650m³/h
(mm)		0,25m/s	0,3m/s	0,45m/s
<input checked="" type="checkbox"/> std	220 x 1100	3,1	3,7	[5,5]*
<input type="checkbox"/> cust	_ x _			

Light cover opening	
<input checked="" type="checkbox"/> std	closing plate (1p.)
<input type="checkbox"/> std	φ 140 (2p.)
<input type="checkbox"/> std	φ 400 (2p.)
<input type="checkbox"/> cust	

- Carbon Steel 1.0038 (S235JRG2) Powder Coated to Camfil SPEC025
- RAL 9010
- RAL _____
- Stainless Steel 1.4307 (304L) pickled - glass blasted

- Approved
- Approved as noted
- Revise and Resubmit



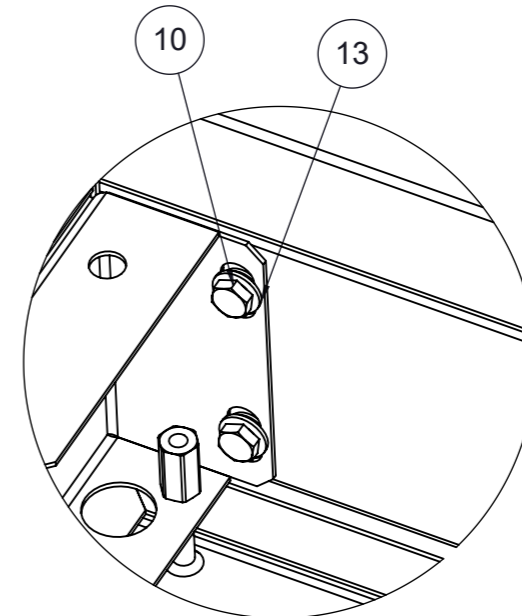
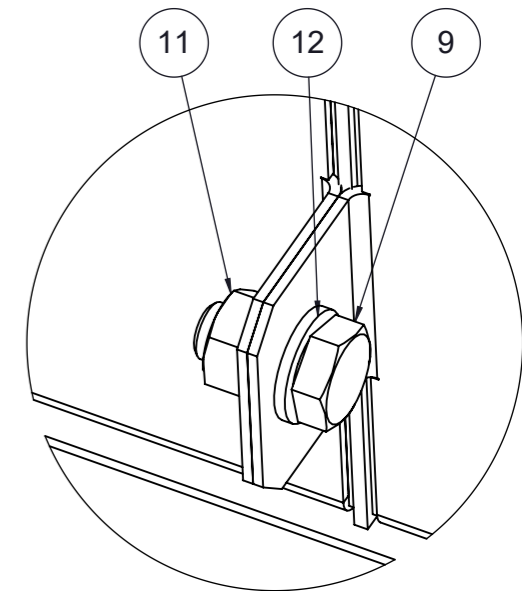
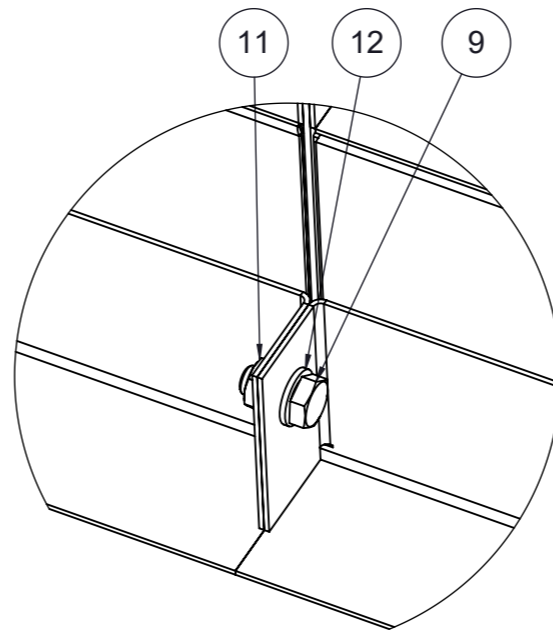
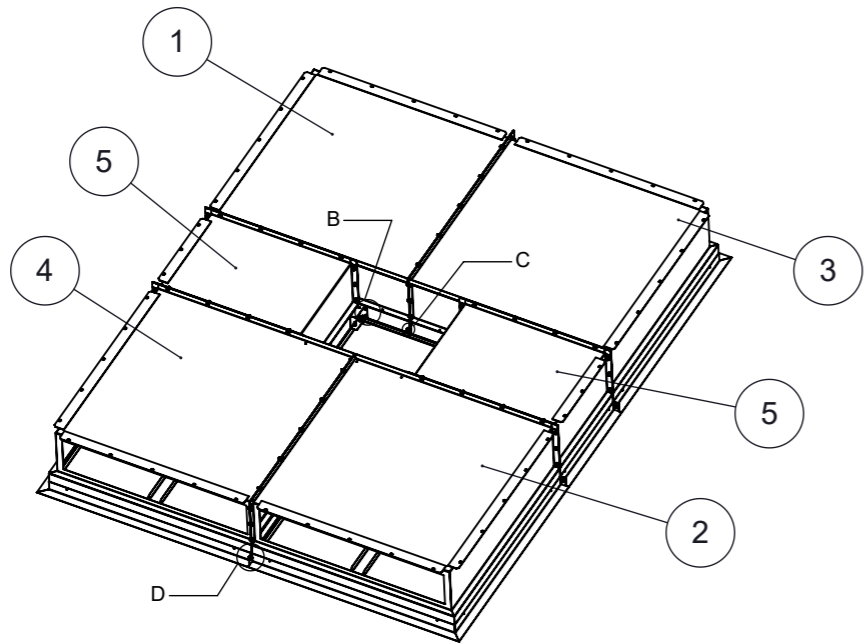
NAME: _____	SIGNATURE: _____		
COMPANY: _____	DATE: _____		
DESCRIPTION CamHosp 2 Type 3,5			
PROJECT -	LAST REVISION 4.7.2018	WEIGHT 228.40 kg	
DRAWING REF. 5526-3500-000	SHEET 1	SIZE A3	

NB: The copyright of this drawing remains with Camfil. Contents must not be used, copied or disclosed to third parties without prior written consent. All rights reserved.

A
B
C
D
E
F

1 2 3 4 5 6 7 8

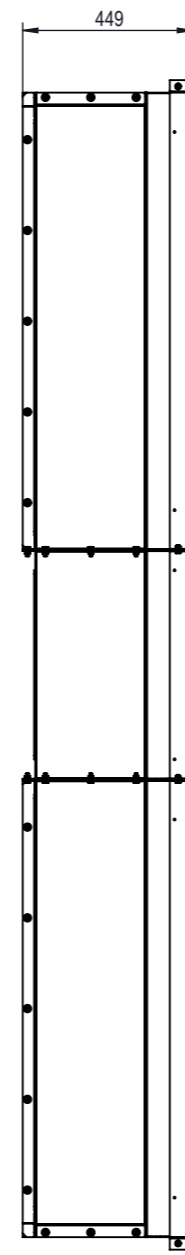
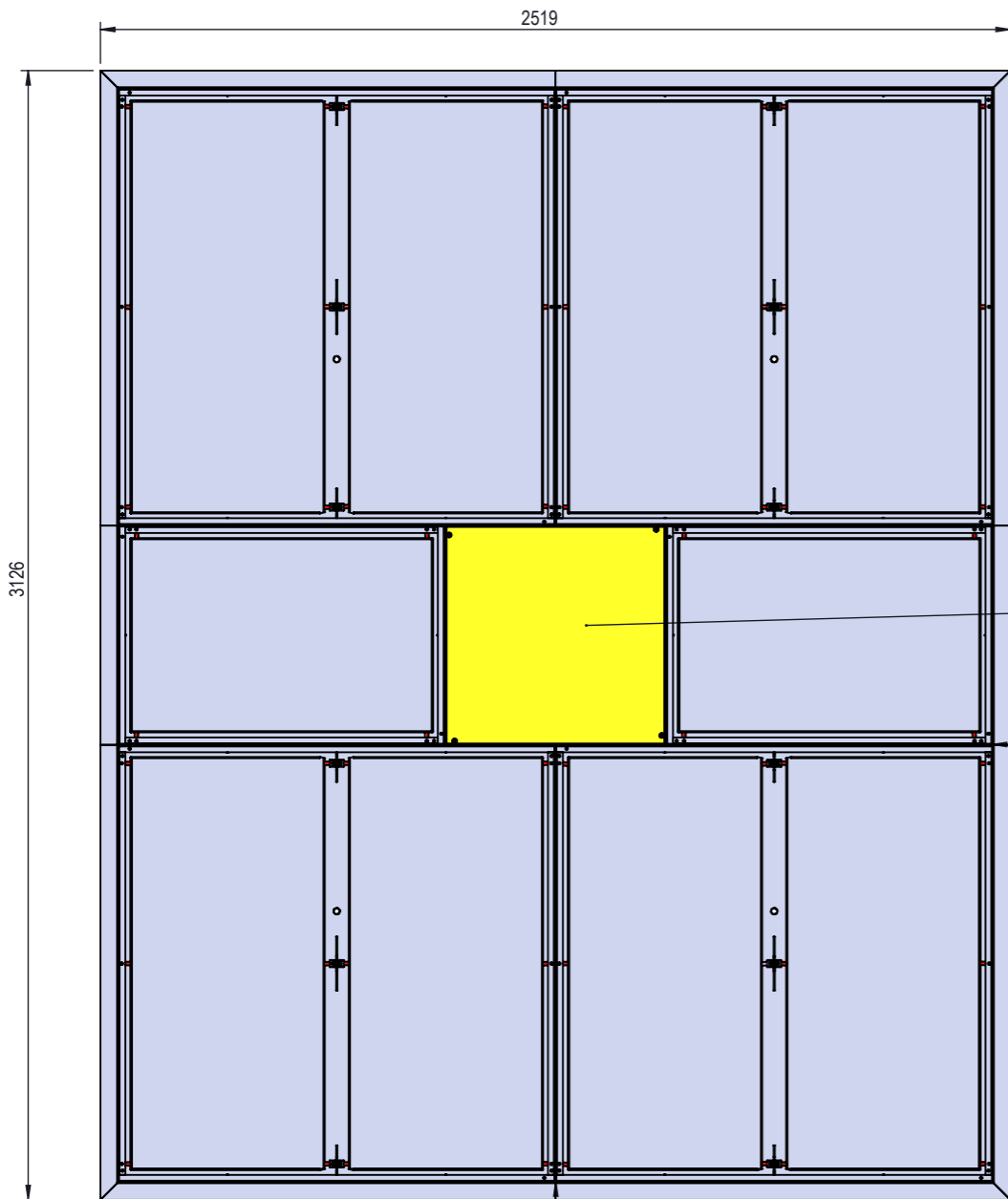
REVISION	DESCRIPTION	DATE	DESIGN	APPROVED
D	AIRFLOW AND AIRSPEED VALUES CHANGED	4.7.2018	MAM <i>[Signature]</i>	VPA <i>[Signature]</i>



DETAIL D

DETAIL C

DETAIL B



ITEM	PART NUMBER	DESCRIPTION	QTY.	CAMHOSP PAINTED MATERIAL	CAMHOSP PAINTED FINISH	CAMHOSP SS 304L MATERIAL	CAMHOSP SS 304L FINISH
1	5526-3511-100	MODULE ASSEMBLY 2X11P5	1	SHEETMETAL - EN10025-2 - S235JR(G2) (1.0038) 1,5mm	Painted RAL 9010 according SPEC025TEC	SHEETMETAL 304L - EN10088 - X2CrNi18-09 (1.4307) 1,5mm	Pickled passivated
2	5526-3521-100	MODULE ASSEMBLY 2X11P5	1	SHEETMETAL - EN10025-2 - S235JR(G2) (1.0038) 1,5mm	Painted RAL 9010 according SPEC025TEC	SHEETMETAL 304L - EN10088 - X2CrNi18-09 (1.4307) 1,5mm	Pickled passivated
3	5526-3512-100	MODULE ASSEMBLY 2X11P5	1	SHEETMETAL - EN10025-2 - S235JR(G2) (1.0038) 1,5mm	Painted RAL 9010 according SPEC025TEC	SHEETMETAL 304L - EN10088 - X2CrNi18-09 (1.4307) 1,5mm	Pickled passivated
4	5526-3522-100	MODULE ASSEMBLY 2X11P5	1	SHEETMETAL - EN10025-2 - S235JR(G2) (1.0038) 1,5mm	Painted RAL 9010 according SPEC025TEC	SHEETMETAL 304L - EN10088 - X2CrNi18-09 (1.4307) 1,5mm	Pickled passivated
5	5526-3540-100	MODULE ASSEMBLY 1X8P5	2	SHEETMETAL - EN10025-2 - S235JR(G2) (1.0038) 1,5mm	Painted RAL 9010 according SPEC025TEC	SHEETMETAL 304L - EN10088 - X2CrNi18-09 (1.4307) 1,5mm	Pickled passivated
6	5526-3500-200	CLOSING PLATE KIT 3.5	1	SHEETMETAL - EN10025-2 - S235JR(G2) (1.0038) 1,5mm	Painted RAL 9010 according SPEC025TEC	SHEETMETAL 304L - EN10088 - X2CrNi18-09 (1.4307) 1,5mm	Pickled passivated
7	5526-3500-910	GASKET KIT	2	EPDM - ASTM D 1056 - 2 A2 black	-	EPDM - ASTM D 1056 - 2 A2 black	-
8	5526-3500-920	GASKET KIT	4	EPDM - ASTM D 1056 - 2 A2 black	-	EPDM - ASTM D 1056 - 2 A2 black	-
9	-	Hex head screw - ISO 4017 M8x16x16	8	SS A2 (304L)	-	SS A2 (304L)	-
10	-	Hex head screw - ISO 4017 M6x16x16	8	SS A2 (304L)	-	SS A2 (304L)	-
11	-	Hex nut - ISO 4032 M8	8	SS A2 (304L)	-	SS A2 (304L)	-
12	-	Washer - NF E25-513 M8	16	SS A2 (304L)	-	SS A2 (304L)	-
13	-	Washer - NF E25-513 M6	8	SS A2 (304L)	-	SS A2 (304L)	-

General tolerances ISO 2768 - vL unless otherwise specified	
DIMENSION	TOLERANCE
< 30	± 1
> 30 to 120	± 1,5
> 120 to 400	± 2,5
> 400 to 1000	± 4
> 1000 to 4000	± 6
> 4000	± 8
Break sharp angles 0,5 to 2	



DESCRIPTION			
CamHosp 2 Type 3.5			
PROJECT	LAST REVISION	WEIGHT	
-	4.7.2018	228,40 kg	
DRAWING REF.	SHEET	SIZE	SCALE
5526-3500-000	2	A3	1:20

NB: The copyright of this drawing remains with Camfil. Contents must not be used, copied or disclosed to third parties without prior written consent. All rights reserved.